

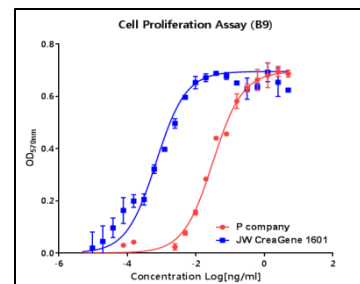
## DATA SHEET

### Product Information

<b>Product Name</b>	: <b>Recombinant Mouse Interleukin-6 (rmIL-6)</b>
<b>Synonyms</b>	: B-cell stimulatory factor 2 (BSF-2), CTL differentiation factor (CDF), Interferon beta-2 (IFN-beta-2)
<b>Description</b>	: IL-6 is an interleukin that acts as both a pro-inflammatory cytokine and an anti-inflammatory myokine. In humans, it is encoded by the IL6 gene. IL-6 is secreted by T cells and macrophages to stimulate immune response. IL-6 also plays a role in fighting infection, as IL-6 has been shown in mice to be required for resistance against bacterium <i>Streptococcus pneumoniae</i> . In addition, osteoblasts secrete IL-6 to stimulate osteoclast formation. Advanced/metastatic cancer patients have higher levels of IL-6 in their blood. One example of this is pancreatic cancer, with noted elevation of IL-6 present in patients correlating with poor survival rates. (Ref. From Wikipedia)
<b>NCBI Accession No.</b>	: NM_031168.2
<b>Amino acid sequence</b>	: MFPTSQVRRGDFTEEDTPNRPVYTTTSQVGGGLITHVLWEIVEMRKELCNGNSDCMNDDALAENNLKLPETIQRNDGCGYQTGYNQEICLLKISSGLLEYHSYLEYMKNNLKDKNKDKARVLQRDTEETLIHIFNQEVKDLHKIVLPTPI SNALLTDKLESQKEWLRTKTIQFILKSLEEFKVTLRSTRQT*
<b>Molecular Mass</b>	: 21.82 kDa (188 aa)
<b>Protein Tags</b>	: No tagging
<b>Source</b>	: <i>E. coli</i> .
<b>Cat. No.</b>	: MIL6-10, MIL6-25, MIL6-50, MIL6-100, MIL6-250, MIL6-500, MIL-1000
<b>Storage</b>	: Should be at $\leq -70$ °C as undiluted aliquots of handy size. Avoid repeated freezing and thawing.
<b>Cross Reactivity</b>	: Human, Mouse, Rat, Monkey

### Quality Control

Test items	Specifications
<b>Appearance</b>	: Clear, colorless liquid
<b>Purity</b>	: Greater than 95 % by RP-HPLC and SDS-PAGE
<b>Specificity</b>	: Using Western blot, detection
<b>Concentration</b>	: 0.1 mg/ml, Bradford method  Determined by proliferation of B9 indicator cells.
<b>Biological Activity</b>	: The ED50 is <0.02 ng/ml, corresponding to a specific activity of $> 5 \times 10^7$ EU/mg
<b>Endotoxin</b>	: Less than 0.2 EU/ $\mu$ g as determined by the LAL method
<b>Formulation</b>	: PBS, 10% glycerol (pH 6.9~7.9) without preservative or carrier proteins.
<b>Stability</b>	: Stable for up to 12 months at $-70$ °C. Stable for a month at 4 °C.
<b>Sterility</b>	: Sterilized through a 0.2 $\mu$ m membrane filter and packaged aseptically. Culture for 2 weeks, no growth



**Manufacturer** : **JW CreaGene Inc.**  
 FL2, Jungang induspia V, 138-6, Sangdaewon-dong, Jungwon-gu, Seongnam-si,  
 Gyeonggi-do, South Korea (462-120)  
 Tel: 82-31-737-3310, Fax: 82-31-737-3301